



Advanced Belief Reasoning in Intelligence

US Army Research Labs
Connect Research Program
Period: 2014 - 2019



AFSecurity

October 2015

Advanced Belief Reasoning in Intelligence



Partners:

- US Army Research Lab
- University of Oslo
- University of Padova

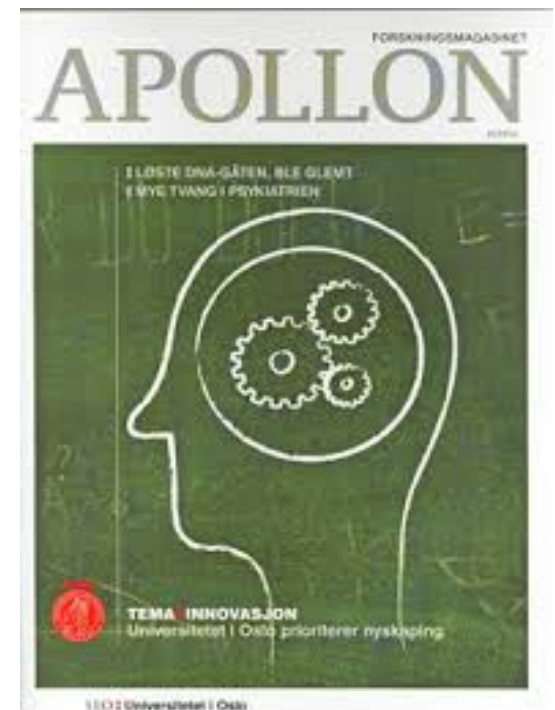
Focus:

- Intelligence analysis
- Analytics tools
- Subjective Logic
- Bayesian networks



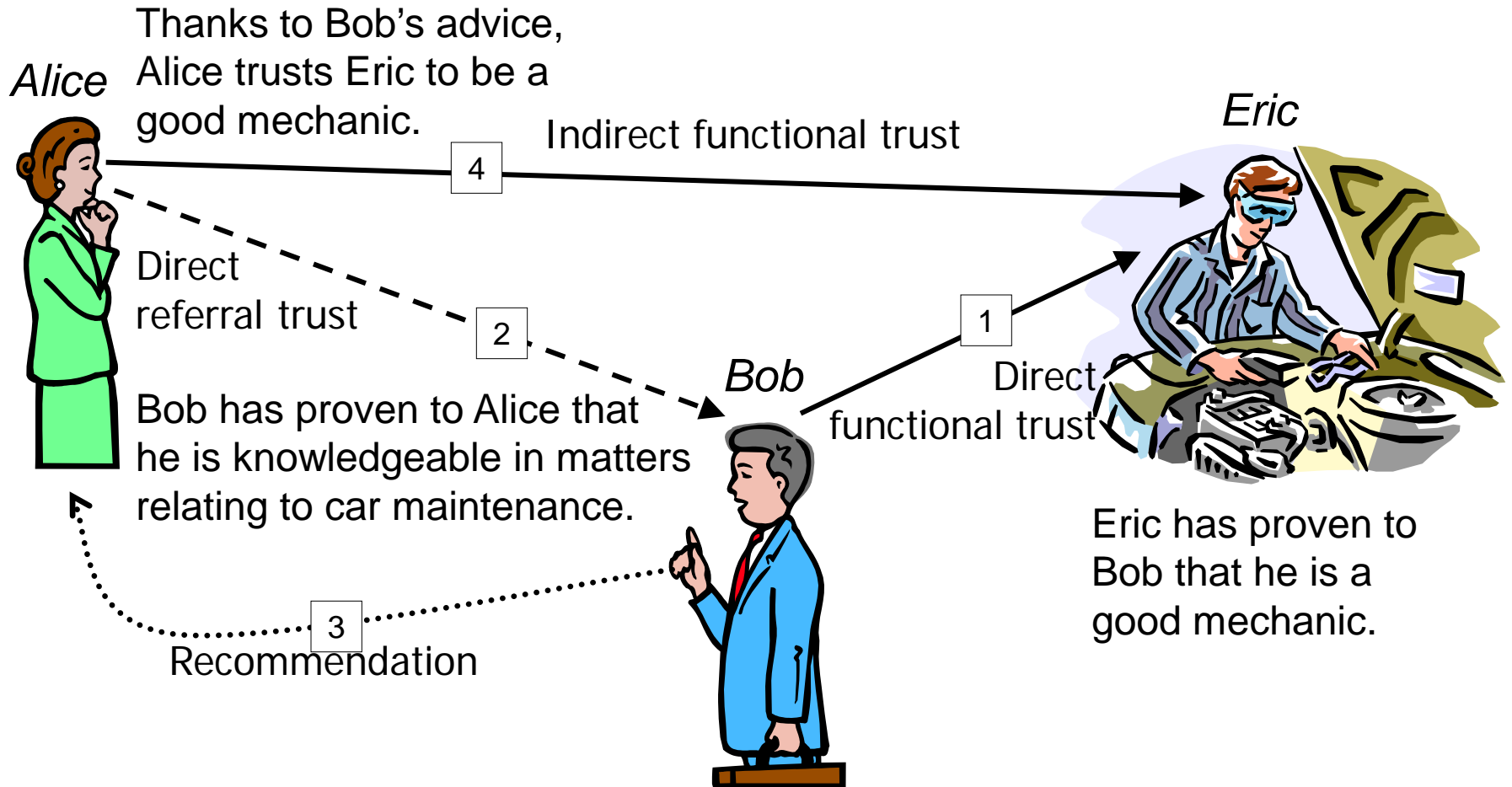
UNIVERSITÀ
DEGLI STUDI
DI PADOVA

Better intelligence services based on a new mathematical logic from UiO could have averted the attack on Saddam

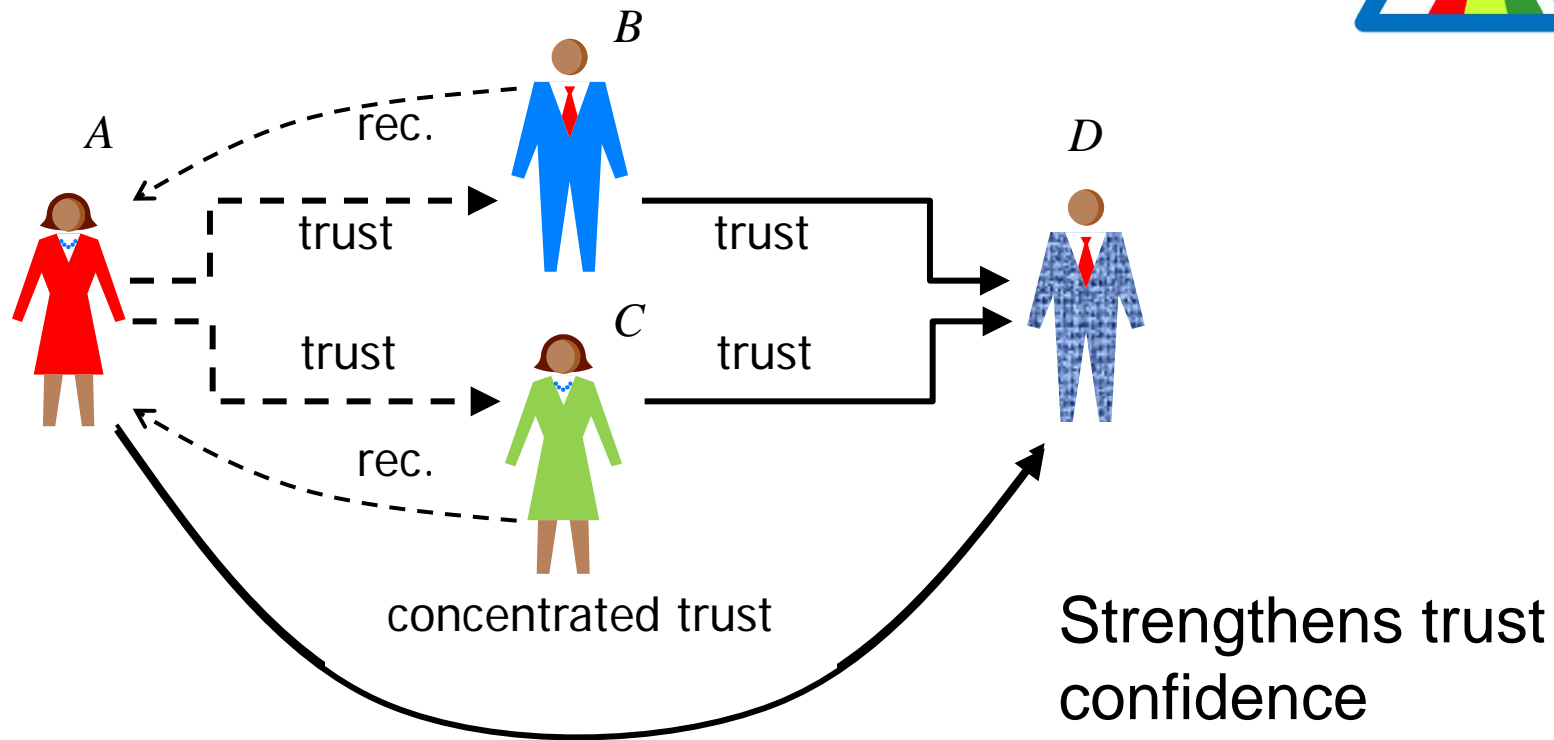


April 2015

Trust transitivity



Trust fusion characteristics



Computed with the fusion operator of subjective logic

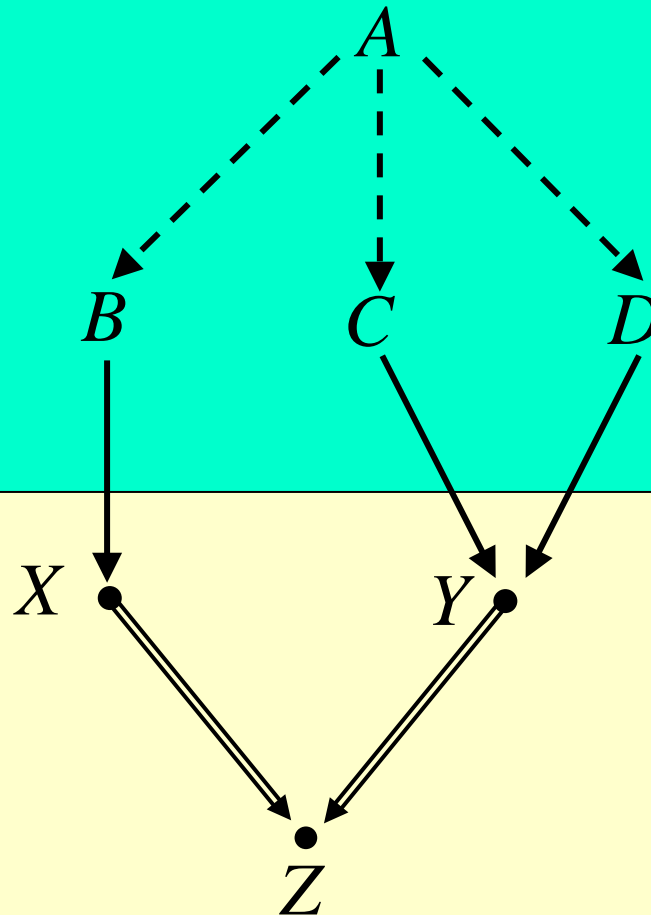
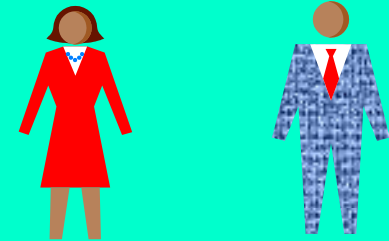
Graph notation: $[A, D] = ([A; B] : [B, D]) \diamond ([A; C] : [C, D])$

Subjective Network



Subjective
Trust
Network

Agents



Subjective
Bayesian
Network

Variables

